

**Rotary District 5080
YOUTH EXCHANGE PROGRAM
Committee Manual**

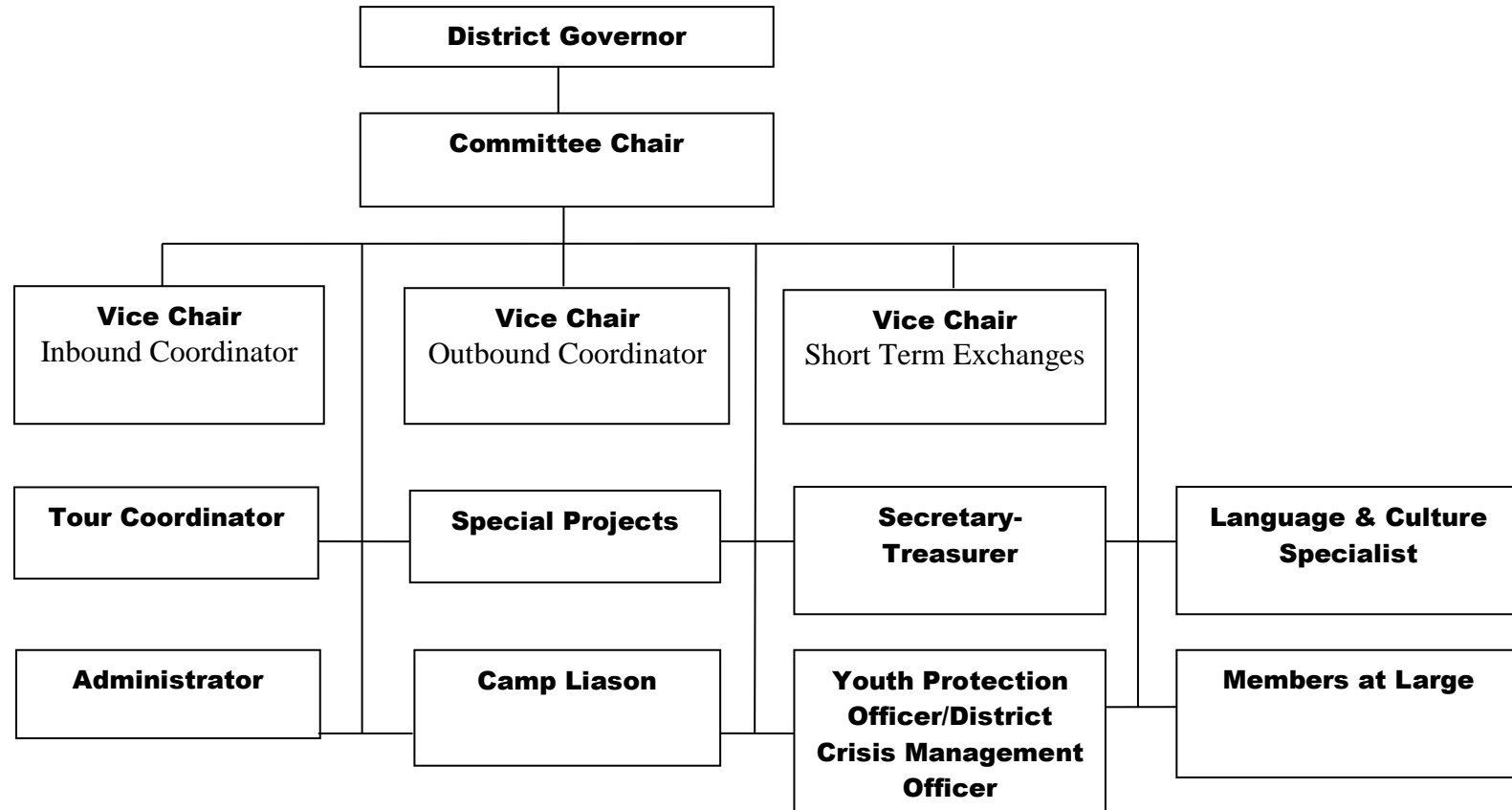
PART A: GENERAL

Contents

A.01 District 5080 Youth Exchange Organization Chart..... 2
A.02 Inbound Exchange Process 3
A.03 Outbound Exchange Process 4

NOTE: Forms are listed on the Index with a Document Reference # of A.51 and higher. These form documents are separated as individual documents in order to facilitate printing and completing the forms. Many are fillable and savable pdf forms and therefore cannot be combined with the other sections into a single document.

A.01 District 5080 Youth Exchange Organization Chart



A.02 Inbound Exchange Process

[Document to be written]

Inbound Exchange Process
2012.04.14

A.03 Outbound Exchange Process

[Document to be written]

Outbound Exchange Process
2012.04.14